

Download the OdinDiet setup and patches from our download site http://download.lmspl.com/download/ODIN_Diet and save those files on your computer and run the setup one by one.

Files to download:

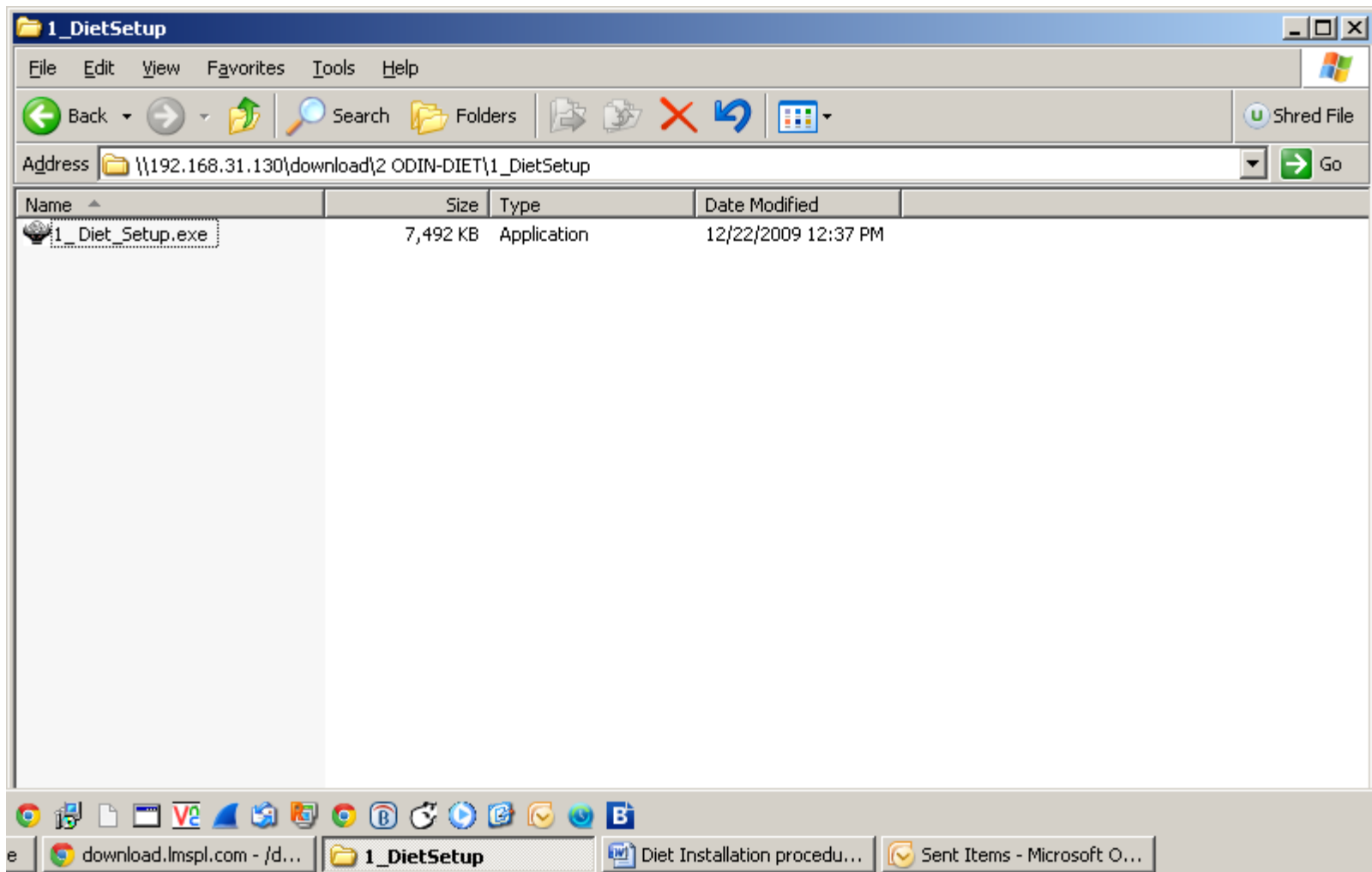
1_DietSetup → [1_ Diet_Setup.exe]

2_Patch → [2_DIET32BIN_SP11_MIG_PREMIUM_PLUS.exe, 3_DIET32PDB_SP11_MIG_PREMIUM_PLUS.exe]

3_Chart Registry → [1.chart register.bat, 2_chartserver & Forget paswr link (Right click to save).reg]

1. 1_Diet_Setup.exe

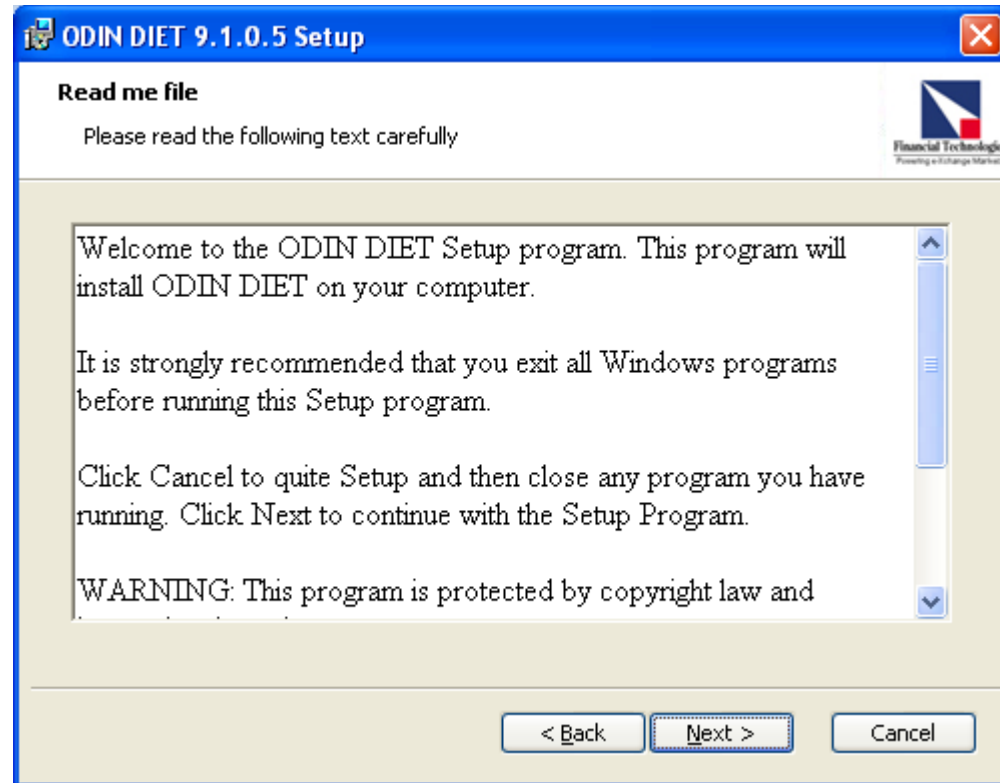




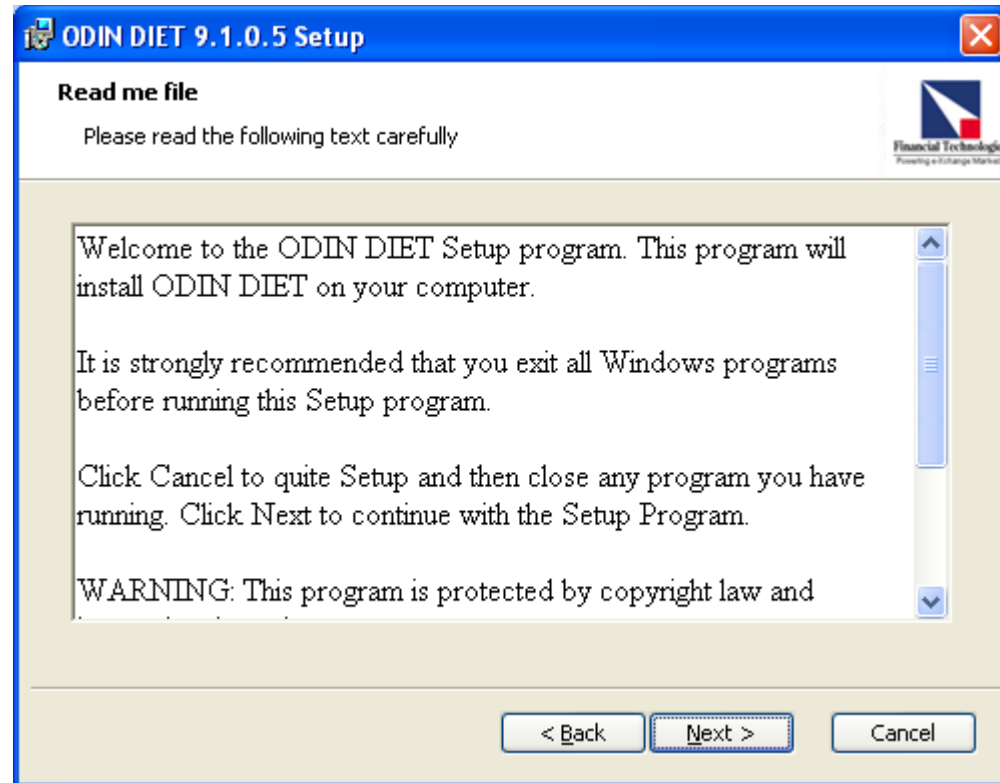
Click on [**1_Diet_Setup.exe**] to start the Odin Diet setup.



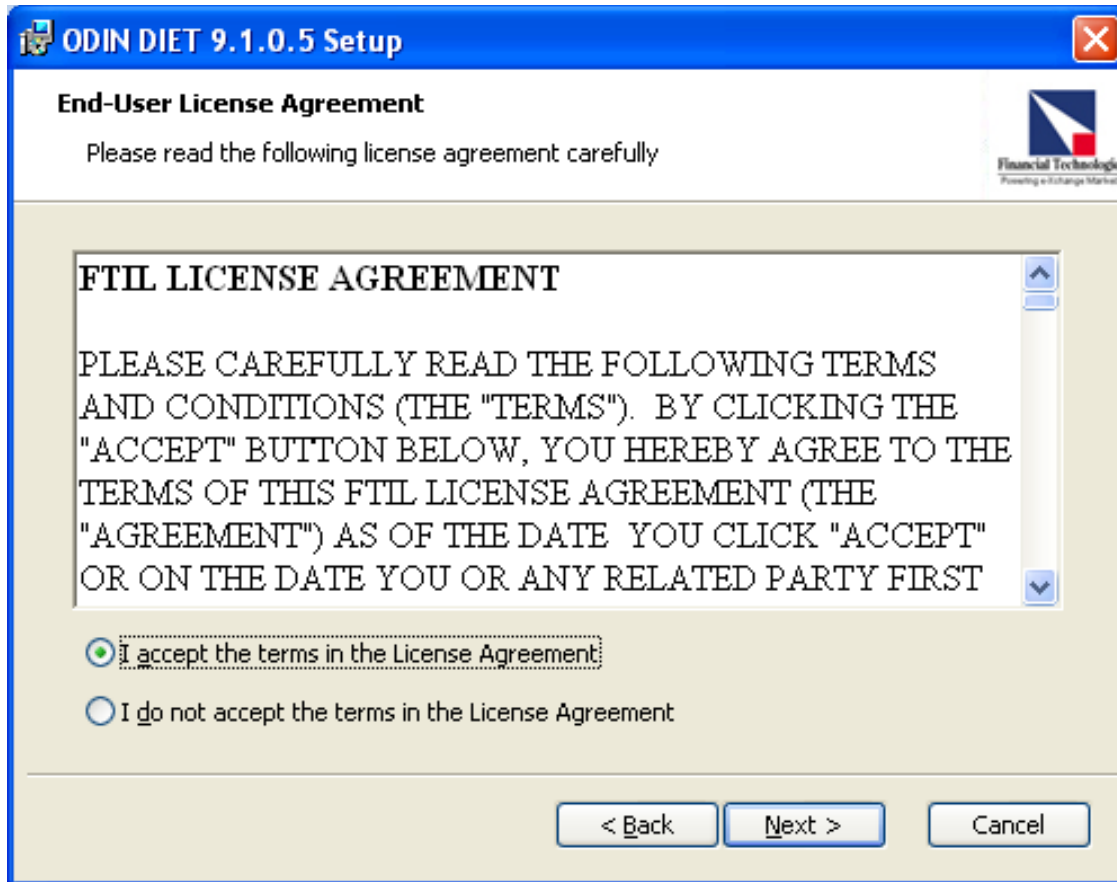
Click "Next" to continue the setup



Click "Next" to continue the setup



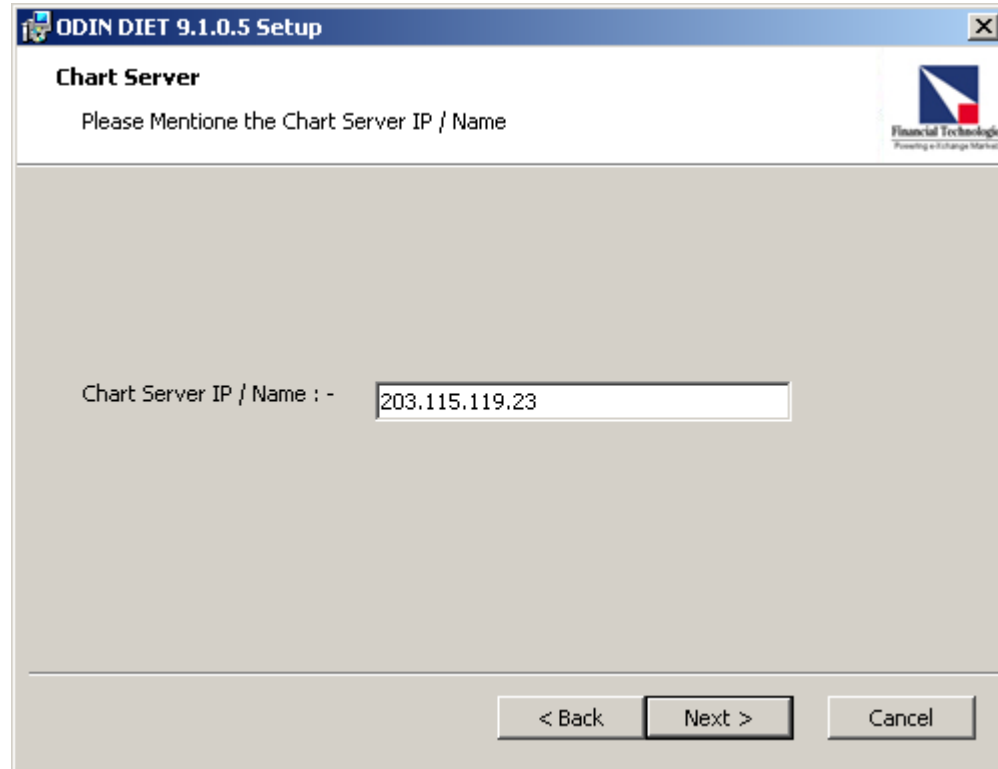
Click "Next" to continue the setup

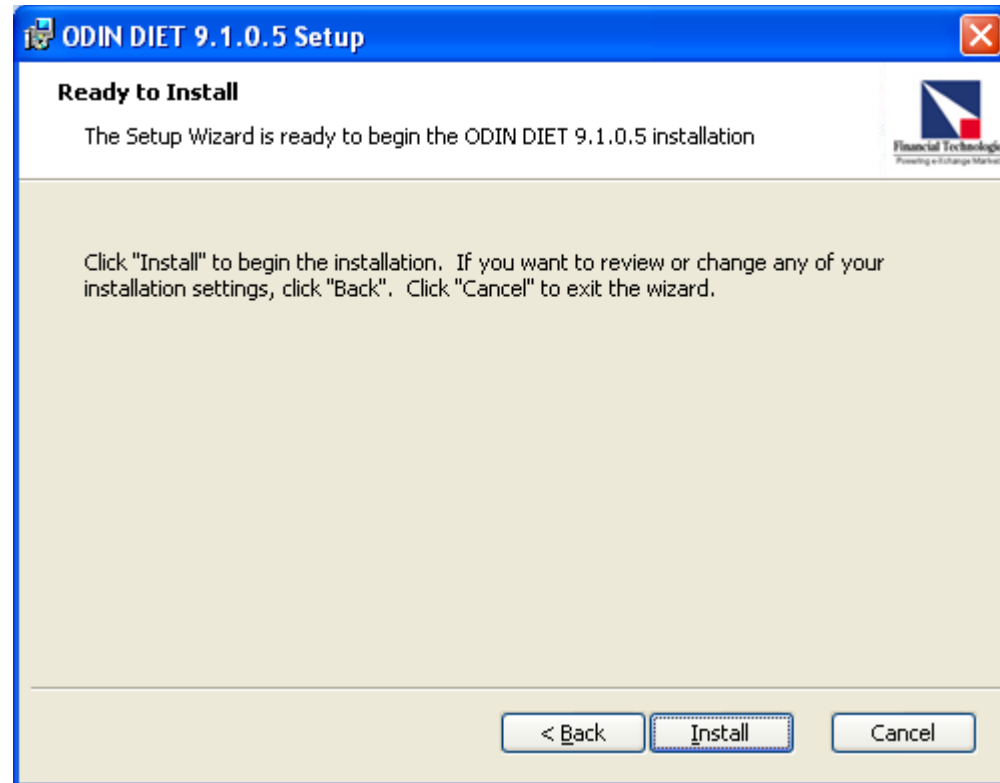


Click on "I accept" and Click on "Next" to continue the setup.

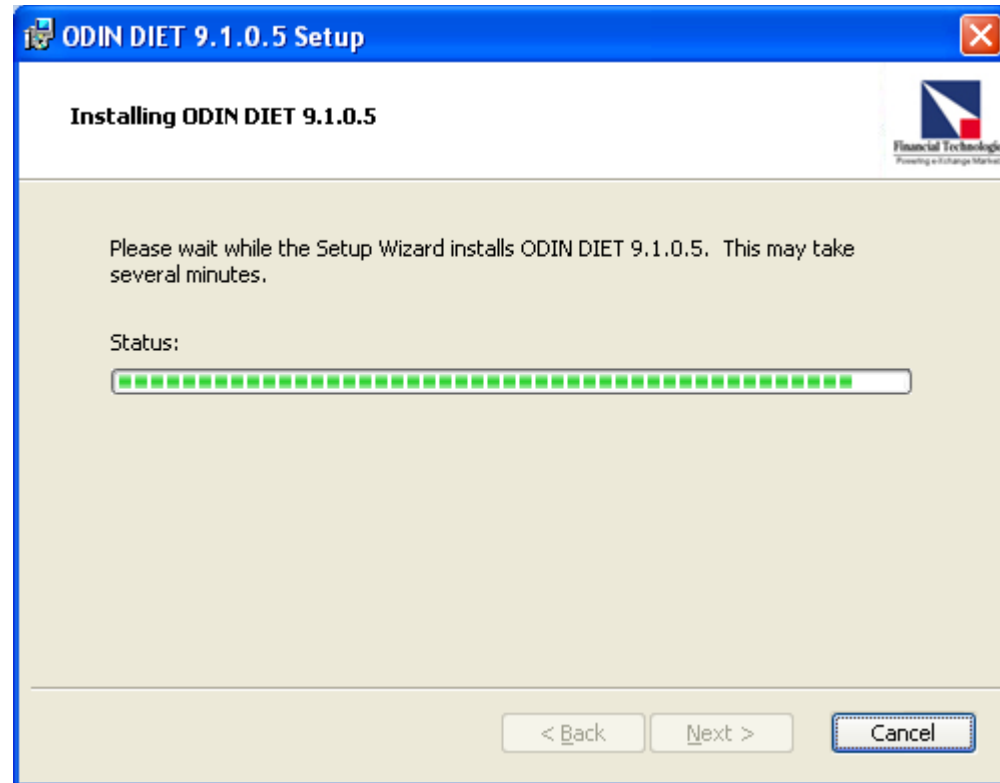
****Very important Screen****

1. Put the chart server IP [**203.115.119.23**] and Click "Next" to continue





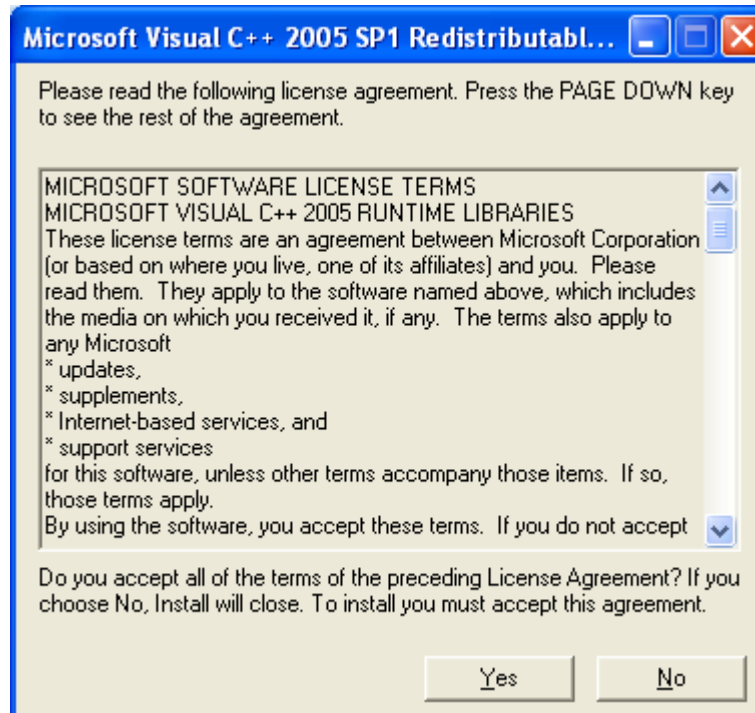
Click "Install" to continue the setup



File are getting copied.



Just Click on "Finish" to continue the setup. Don't change anything here.



The setup for Vcredist x86 will start Click on "Yes" to finish the setup.

Patch Installation

After the Diet Setup u have to run and install the two Patches which u have downloaded from the Patch folder,

Follow the given below instruction.

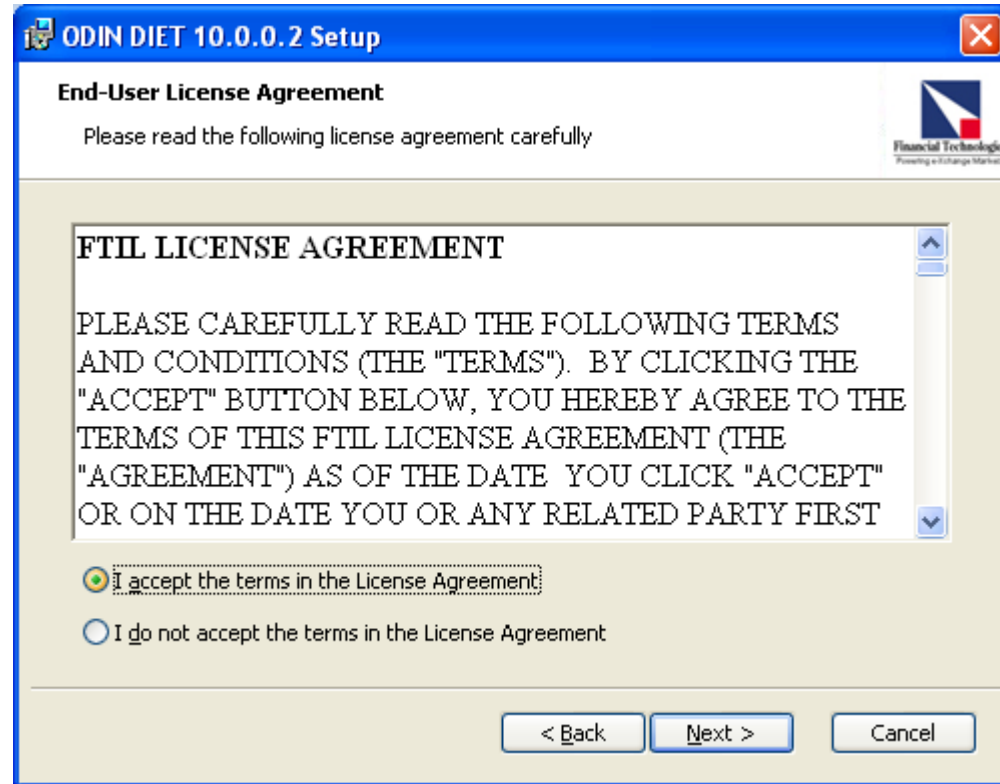
1. **2_Patch:** (Download two files **2_DIET32BIN_SP11_MIG_PREMIUM_PLUS.exe**, **3_DIET32PDB_SP11_MIG_PREMIUM_PLUS.exe**)



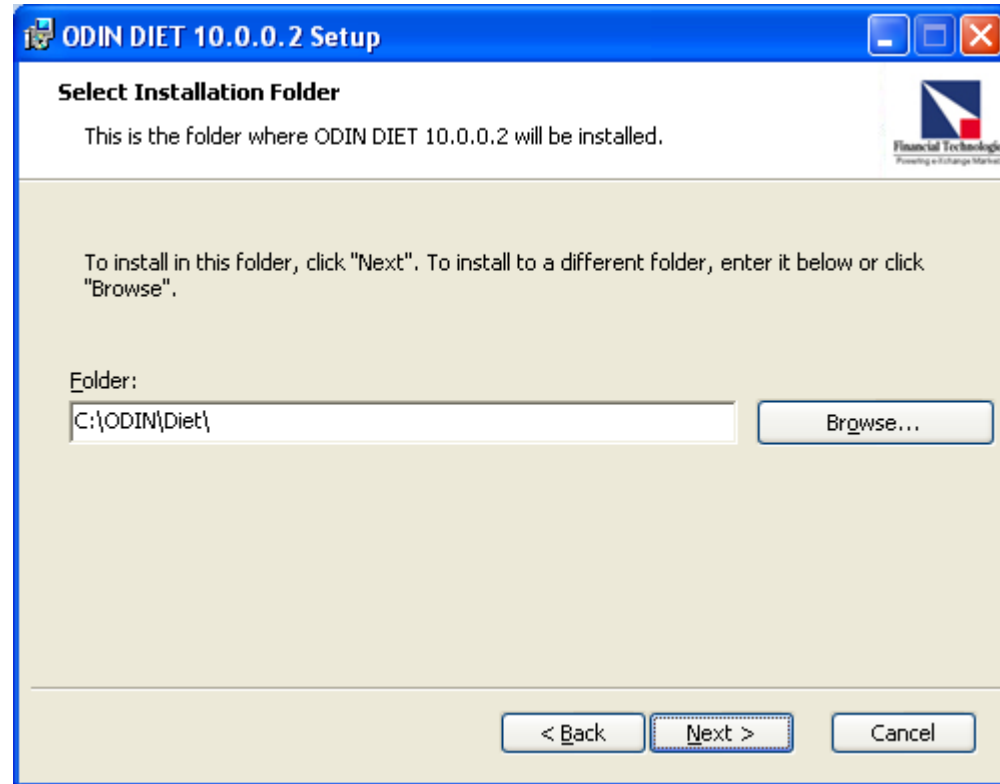
First Click on "2_**DIET32BIN**_SP11_MIG_PREMIUM_PLUS.exe " to start the Patch installation.



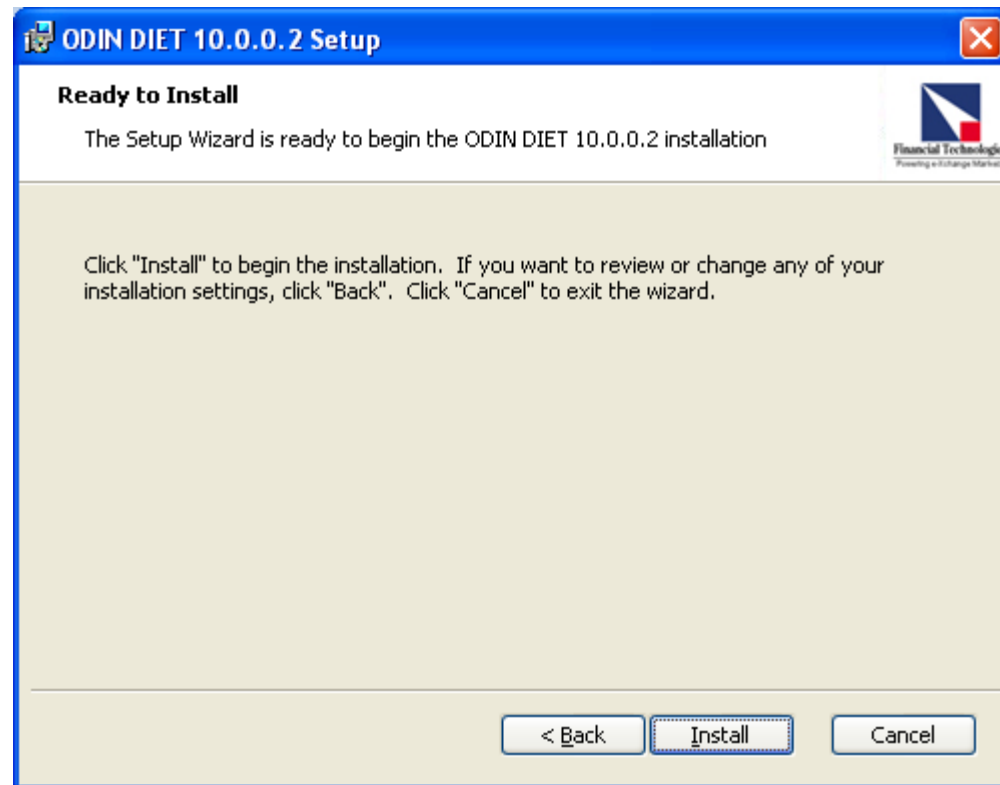
Click on "Next" to continue the setup



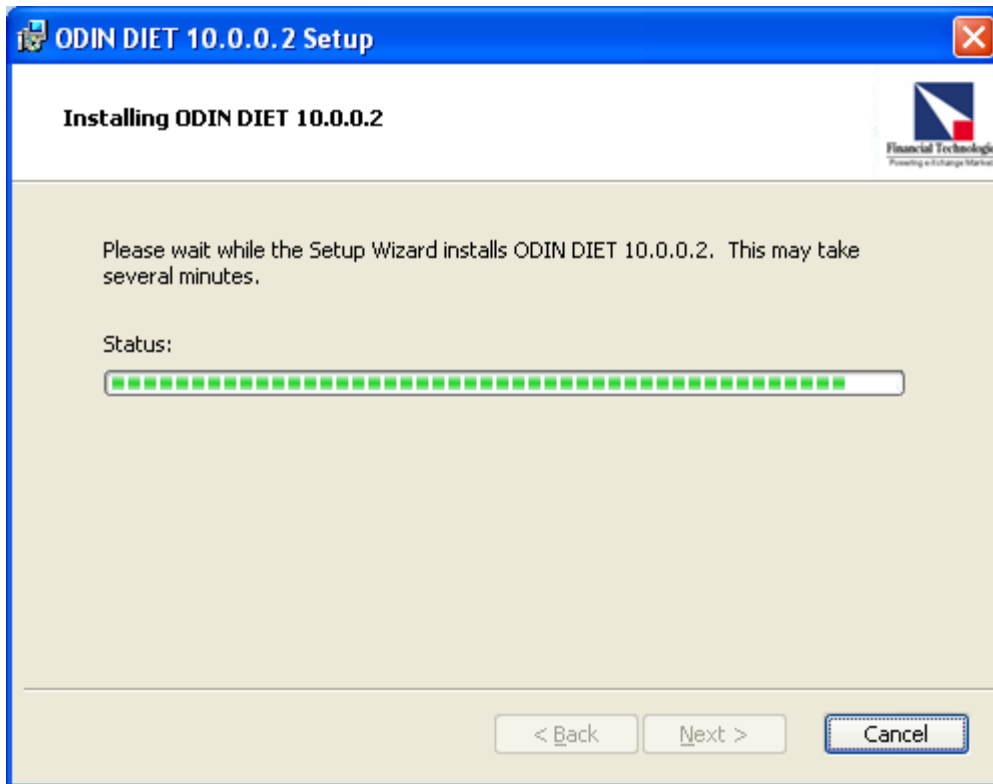
Click on "I accept" and Click on "Next" to continue the setup.



Just click on “Next” to finish the setup, Dont change the folder location.

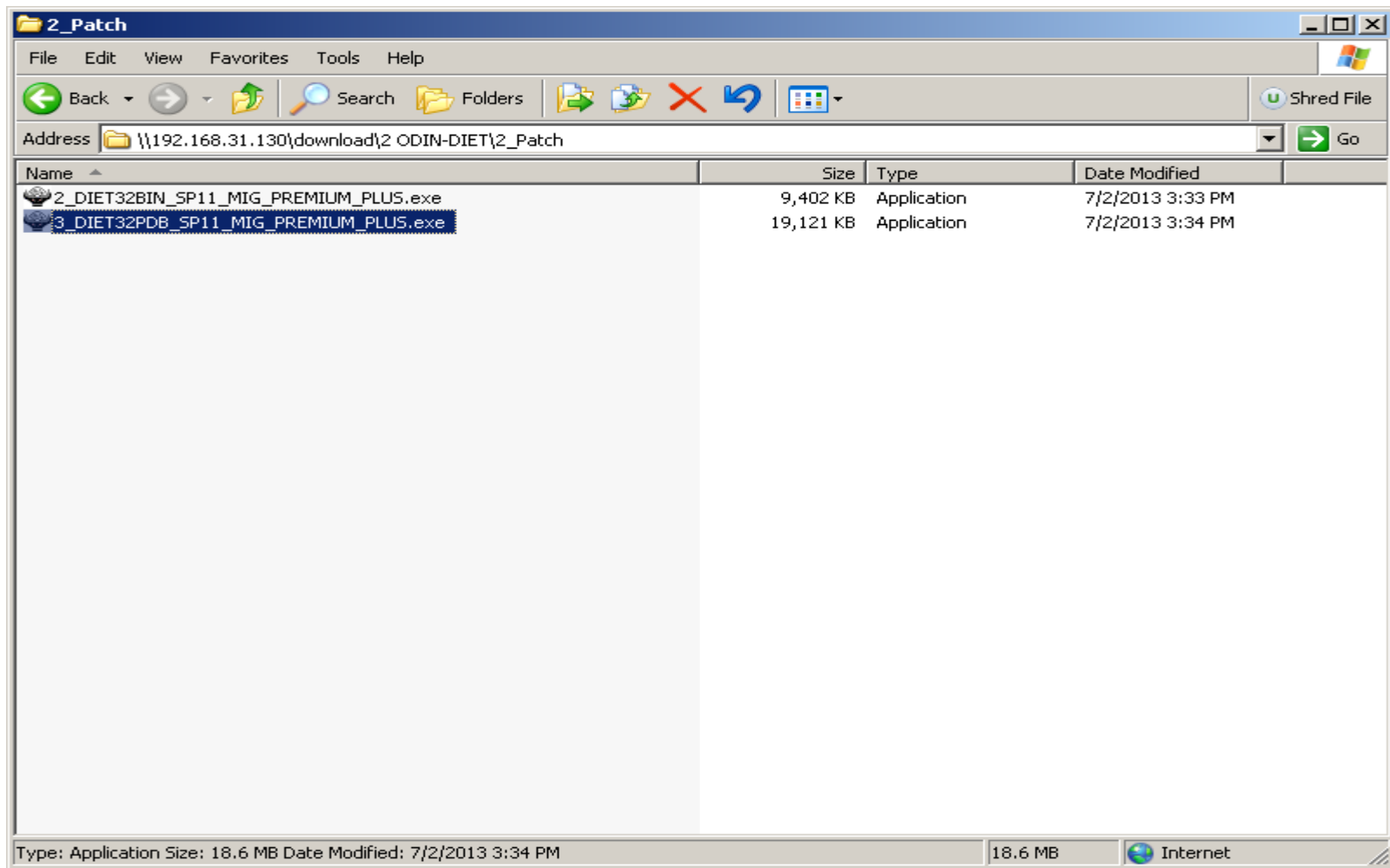


Click on "Install" to continue the setup





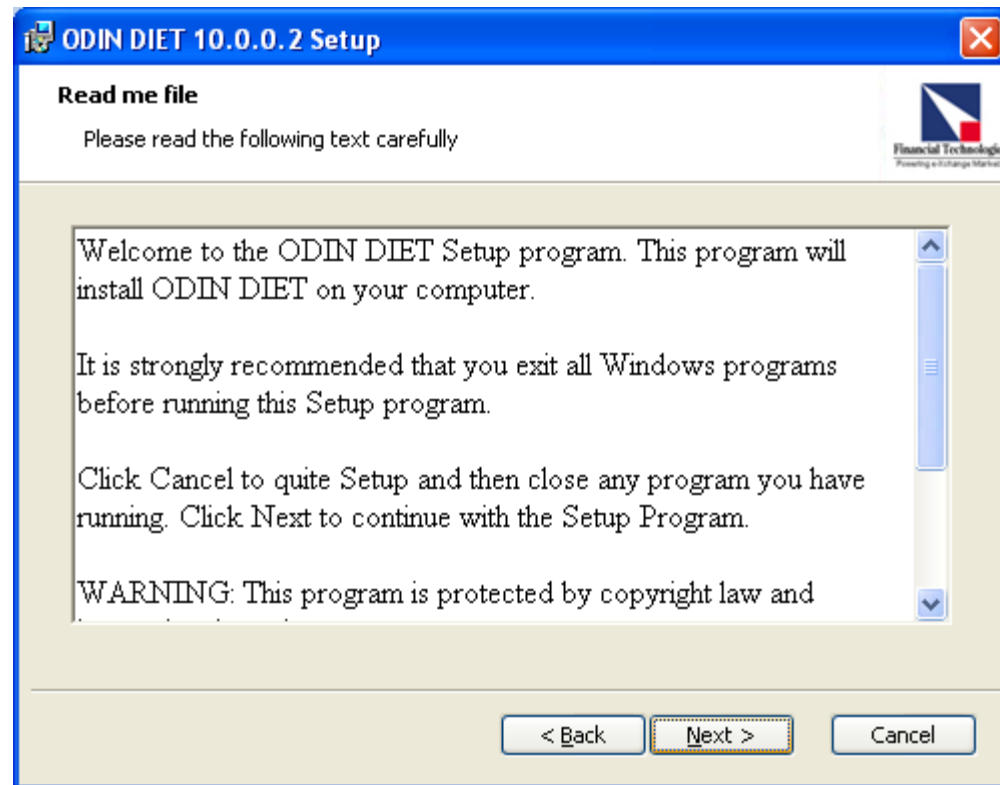
Just click on finish to continue, Don't click on "launch".



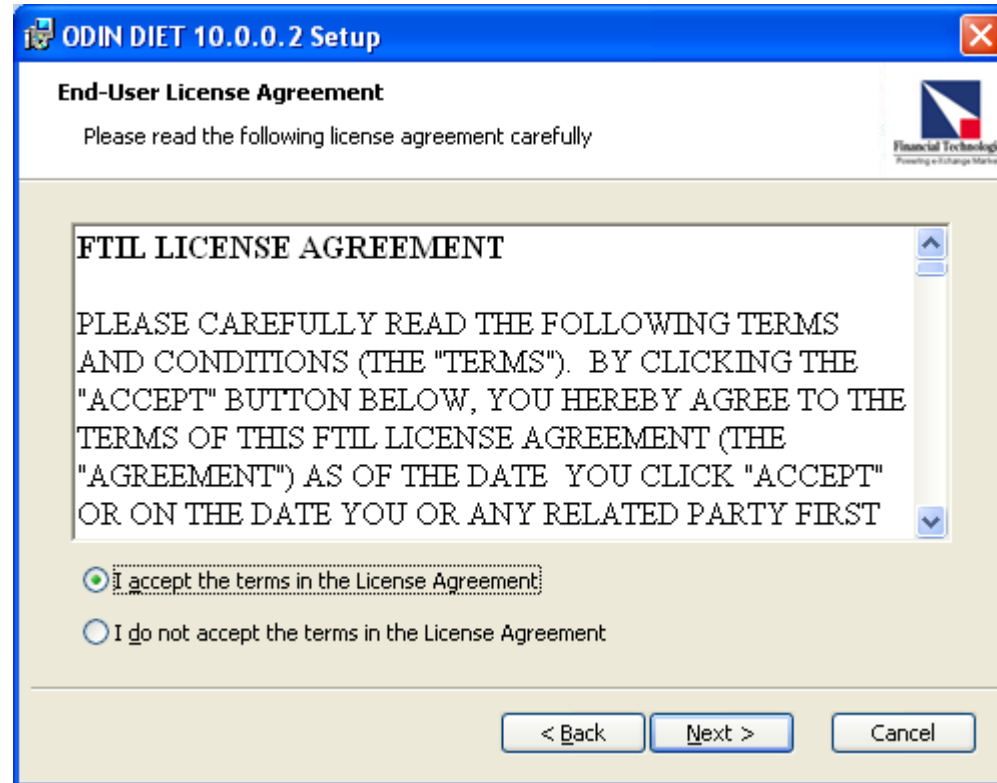
Click on "3_**DIET32PDB**_SP11_MIG_PREMIUM_PLUS.exe" to run the second patch.



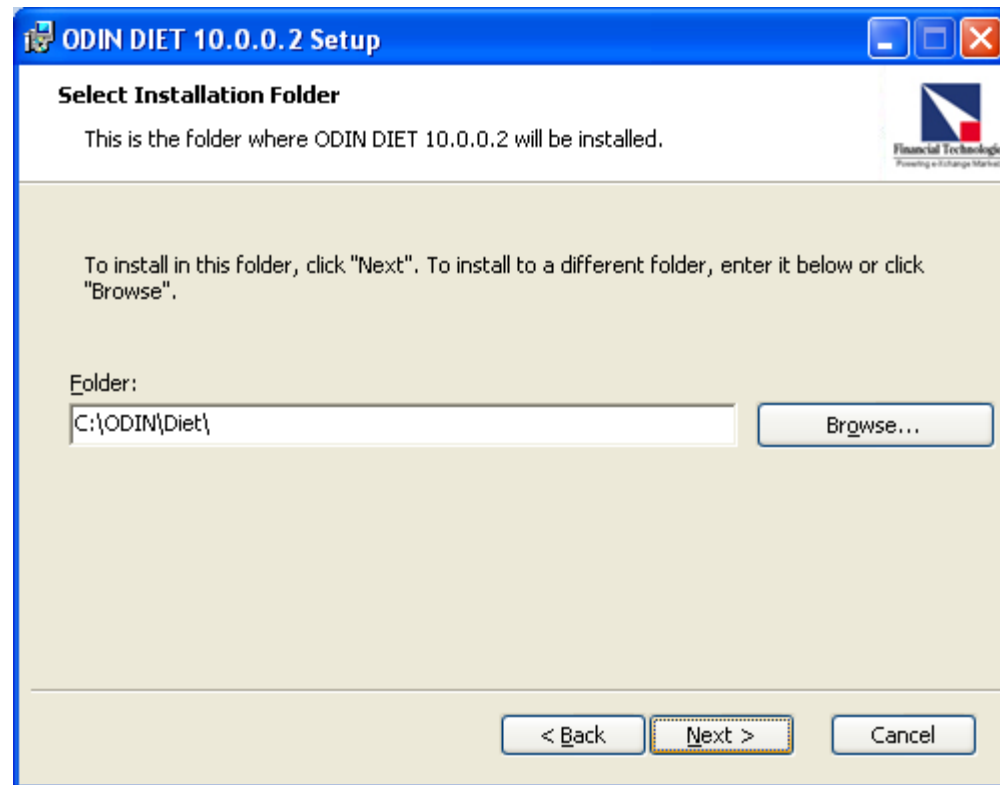
Click "Next" to continue



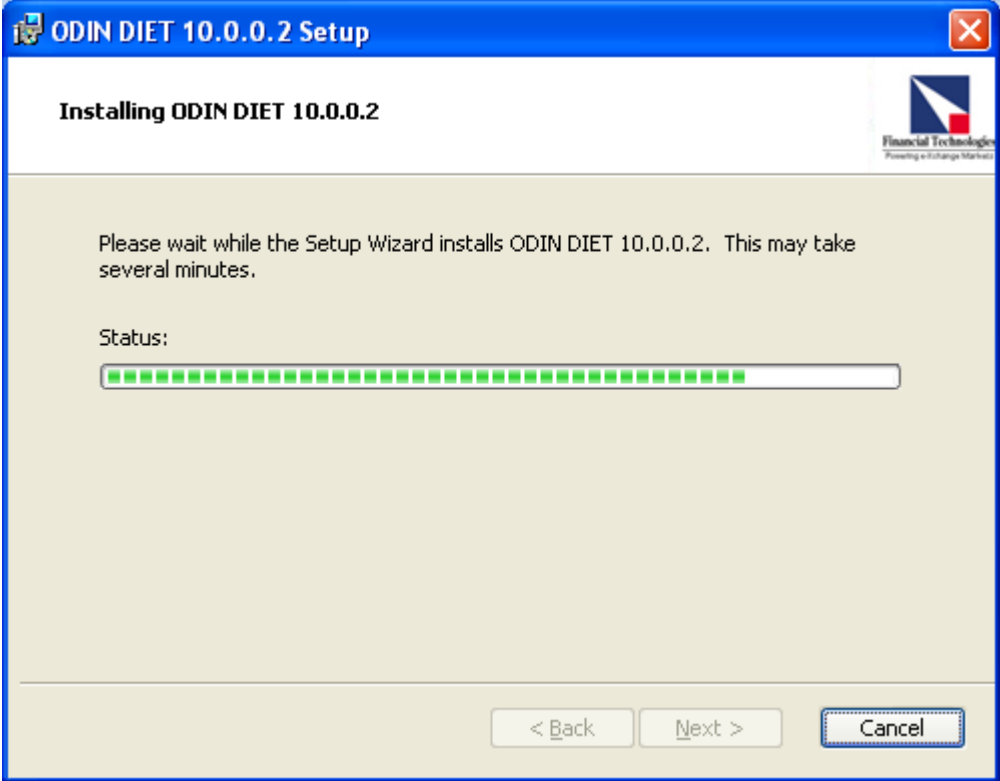
Click "Next" to continue the setup.



Click on "I accept the terms " to continue the setup.



Just click on “Next” to finish the setup dont change the folder location.





Click "Finish" to End the setup.



The patch installation is complete.

Chart registry Installation

After the Diet Setup & Patch updation, u have to run the two chart registry files which u hv downloaded.

Follow the given below instruction.

- 1. Chart Registry: just click on both the file (chart register.bat, chartserver & Forget paswrđ link.reg) and run it...**

